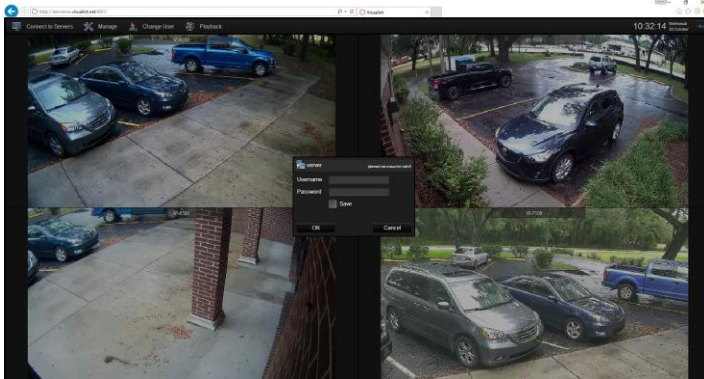
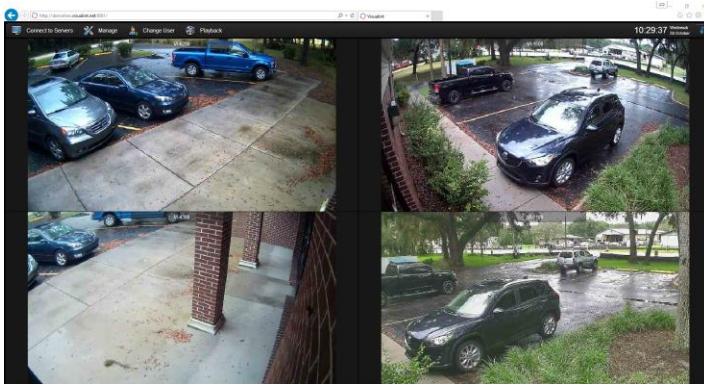


Visualint Line Web Client User Guide



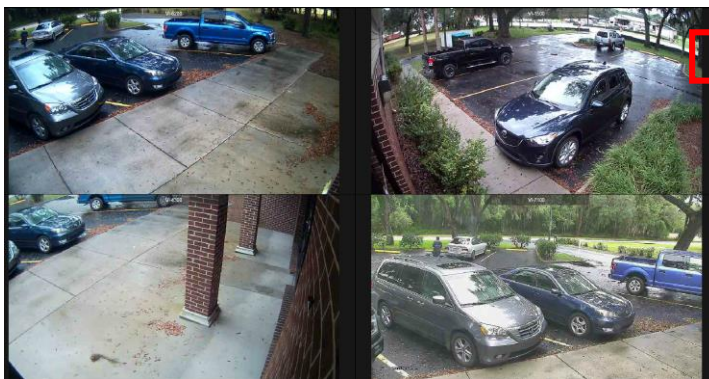
To view your Visualint Line NVR from your browser locally enter your IP address or externally enter the dynamic DNS into your browser address bar. (e.g. yoursitename.visualint.systems)

You will be prompted to enter your **Username / Password**



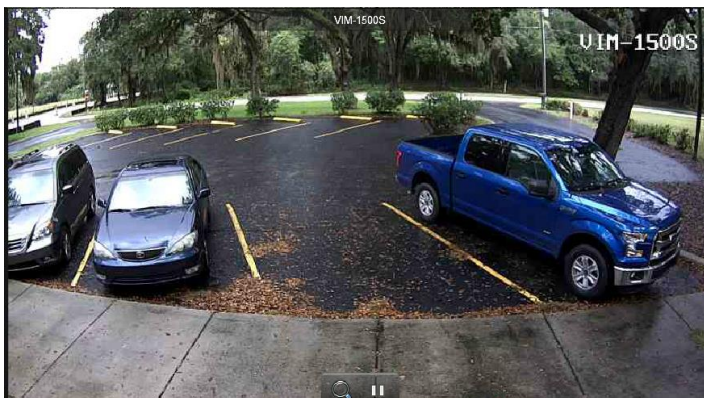
Default grids are set per user inside the Observer application on the Line NVR.

Once logged in you will be provided with the default grid of the cameras configured on the Visualint NVR.




To scroll through the available cameras use the arrow navigation button in the upper right hand

corner of the screen. 

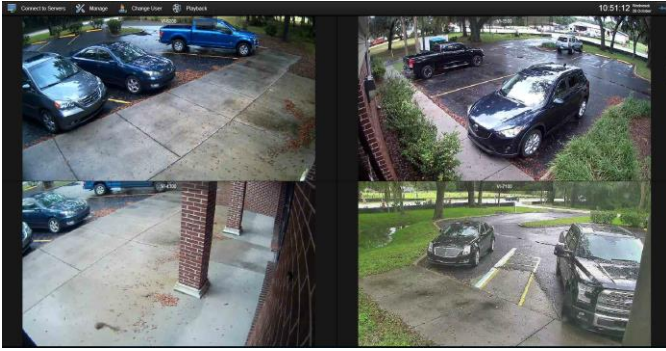


Double click on any of the camera streams to view of the selected camera full screen.

Hovering over any of the cameras will show the camera function button: 

Zoom / PTZ control / Pause

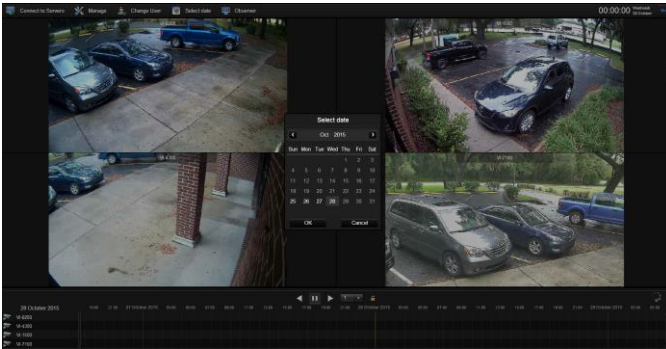
The mouse scroll wheel controls Digital Zoom.



Hovering above the camera grid results in the navigation bar to appear.

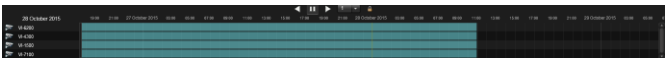


Playback is accessed by clicking the playback button.

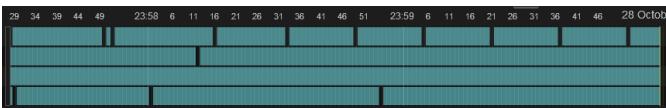


Once in playback, select the date you would like to view.

To select playback on a different camera double click on the desired camera view.



Playback navigation is done by the timeline bar located at the bottom.

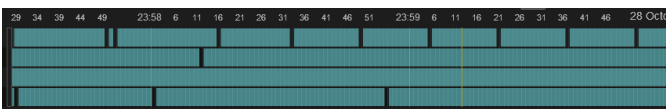


Use the scroll wheel to zoom in and out of the timeline.



Playback speed can be adjusted by clicking on the dropdown.

Select the appropriate playback speed and then select the play or reverse button to view footage.



The yellow line indicates the position of the playback. Clicking on the timeline causes playback to jump to the desired position.

NOTE:

The Observer web interface does not provide the ability to export video or listen to audio playback. This functionality is available by directly connecting to the Line NVR.



Supports all mainstream browsers. With port forwarding enabled, access your NVR from anywhere!